

## Hera residential complex

Location **Iskele, Bafra**



### About the project



Developer	<b>DEM's Construction</b>
Start of sale	<b>26.11.2023</b>
Key handover	<b>2027</b>
Houses/blocks	<b>8</b>
Building floor	<b>4</b> Min <b>4</b> Max
Units total	<b>400 - Studio, 58 - 2+1</b>

Distance to the sea - 300 m

Distance to key locations:

Airport 60 min. Supermarket 1 min. Pharmacy 1 min. School 7 min. Kindergarten 9 min. Hospital 10 min.

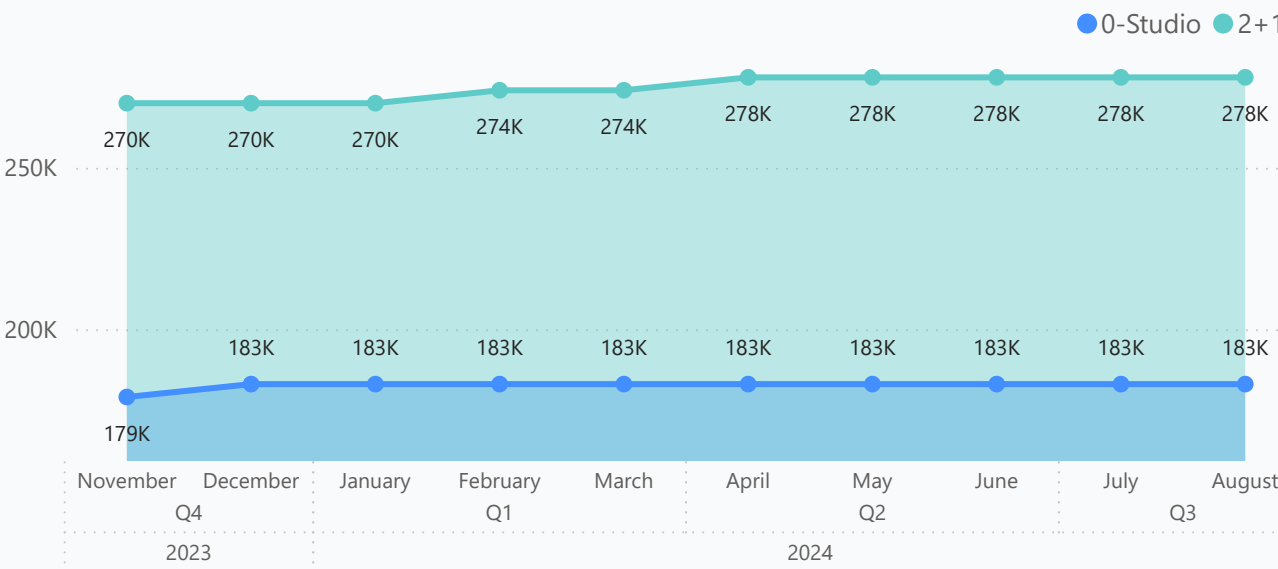
Hera is the only residential project in Northern Cyprus with the concept hotel surrounded by sea and history. - In the tourist region of Bafra - Close to Bafra Beach - Between three 5\* hotels

### Complex infrastructure

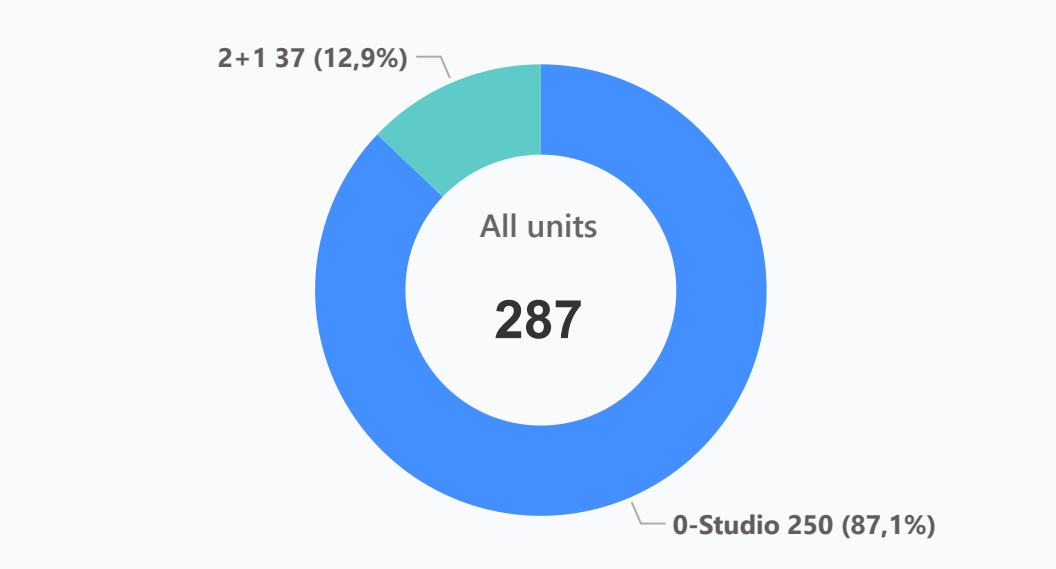
24/7 reception	Aqua park	Bar	Beauty salon	Café	Central generator	Closed territory	Commercial property	Fitness centre	Hamam
Indoor pool	Kid's play room	Kid's playground	Kid's pool	Laundry	Lobby	Maintenance office	Massage rooms	Open pool	Parking
Rental office	Restaurant	Sauna	Security Camera System	Shuttle service	Smart home	Storage rooms for all units	Tennis court	VRF system	

### Available units 287 / 460 total

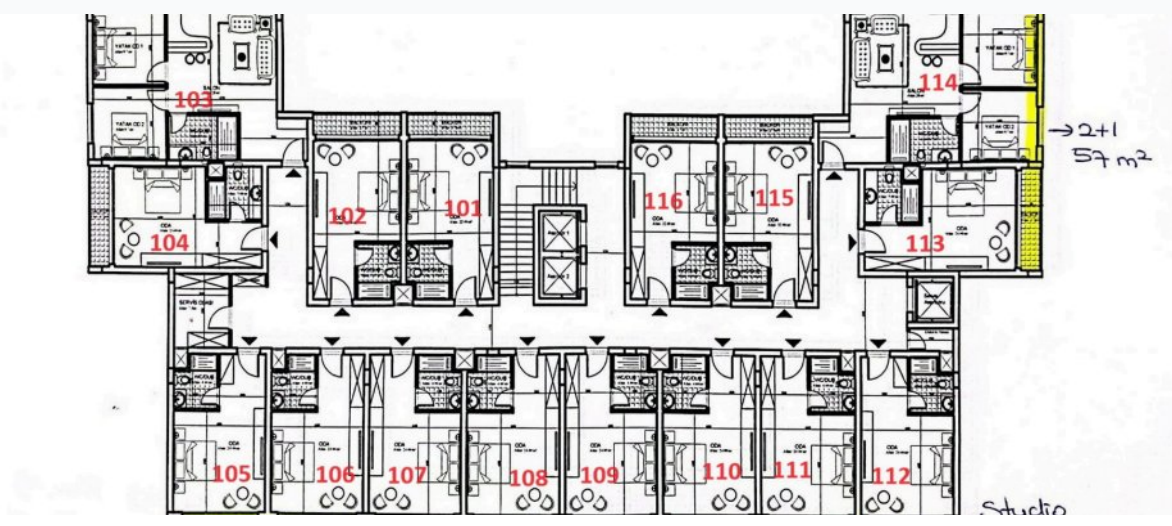
#### Median price per unit, K GBP



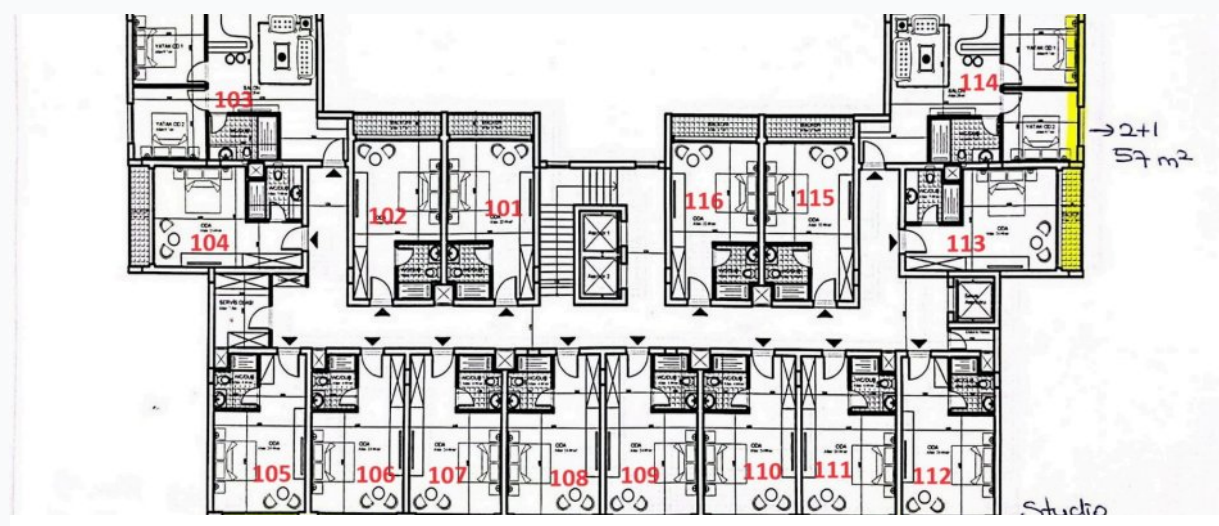
#### Structure of available units



### Plans



0-Studio



2+1

### Payment plans

Deposit (non-refundable) 5000 GBP for a month

Option	Down payment	Installments months	Discount	Offer
Option 1	40 %	42	-	-
Option 2	-	-	-	-
Option 3	-	-	-	-
Option 4	-	-	-	-

### Special offer

100% return of investment within 7 years.



Fully furnished design package

Included into the price

Rental guarantee

14.28% per year

Trafo 0 GBP

Resale after 60%

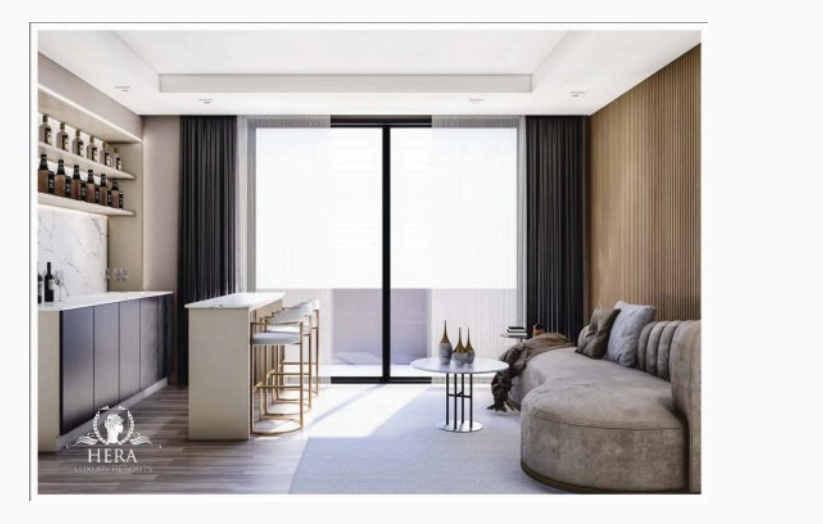
Maintenance fee -

Rental services 60 %

### Details

Bedrooms	Subtype	Block	Unit №	Floor	View	Bathroom	Internal area, sq. m	Balcony/ Terrace, sq. m	Rooftop terrace, sq. m	Garden, sq. m	Gross covered area, sq. m	Current price, GBP	Price per sqm, GBP
0-Studio	Flat	E2	315	02							32	183 000	5 719
0-Studio	Flat	E2	316	02							32	183 000	5 719
0-Studio	Flat	E2	401	03							32	190 000	5 938
0-Studio	Flat	E2	402	03							32	190 000	5 938
0-Studio	Flat	E2	404	03							32	190 000	5 938
0-Studio	Flat	E2	405	03							32	190 000	5 938
0-Studio	Flat	E2	406	03							32	190 000	5 938
0-Studio	Flat	E2	407	03							32	190 000	5 938
0-Studio	Flat	E2	408	03							32	190 000	5 938
0-Studio	Flat	E2	410	03							32	190 000	5 938
0-Studio	Flat	E2	411	03							32	190 000	5 938
0-Studio	Flat	E2	412	03							32	190 000	5 938
0-Studio	Flat	E2	413	03							32	190 000	5 938
0-Studio	Flat	E2	415	03							32	190 000	5 938
0-Studio	Flat	E2	416	03							32	190 000	5 938
2+1	Flat	C	103	0							60	261 000	4 350
2+1	Flat	C	114	0							60	261 000	4 350
2+1	Flat	C	203	01							60	270 000	4 500
2+1	Flat	C	214	01							60	270 000	4 500
2+1	Flat	C	303	02							60	278 000	4 633
2+1	Flat	C	314	02							60	278 000	4 633
2+1	Flat	C	403	03							60	285 000	4 750
2+1	Flat	C	414	03							60	285 000	4 750
2+1	Flat	D1	203	01							60	270 000	4 500
2+1	Flat	D1	214	01							60	270 000	4 500
2+1	Flat	D1	303	02							60	278 000	4 633
2+1	Flat	D1	314	02							60	278 000	4 633
2+1	Flat	D1	403	03							60	285 000	4 750

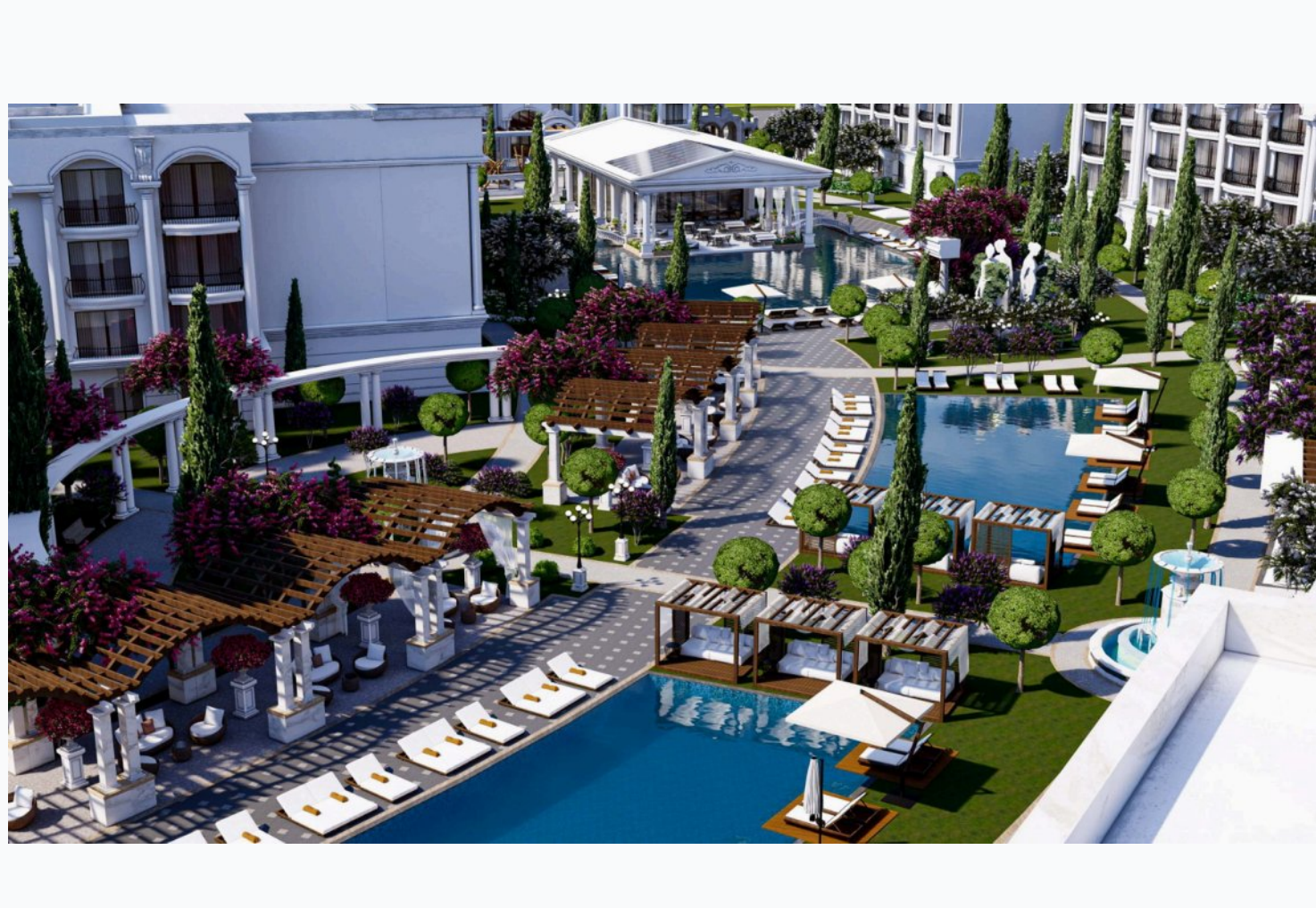
### Interior specification



### Interior specification

Ceramic flooring	High quality furniture in bathrooms	High quality taps and showers	Laminate flooring in the bedrooms	Spot lighting	Toilet integrated in the walls
------------------	-------------------------------------	-------------------------------	-----------------------------------	---------------	--------------------------------

### Exterior specification



### Exterior specification

Glass fence balcony	Landscape design
---------------------	------------------

### Location of complex

